

# Scaffold Accessories & Specials

Available in Painted & Galvanised Finish



## Two Board Hopup Intermediate

Code: 2BHBCPLR  
Size: 2 Board  
Weight: 7.5 kg



## Three Board Hopups with Spigot

Code: 3BHBS  
Size: 3 Board  
Weight: 12.1 kg



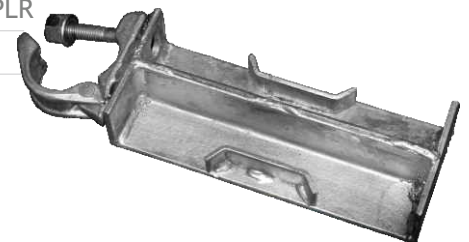
## Two Board Hopups with Spigot

Code: 2BHBS  
Size: 2 Board  
Weight: 7.3 kg



## Galvanised One Board Hopup with Coupler

Code: 1GBHBCPLR  
Size: 1 Board  
Weight: 2.8 kg



## Steel Sole Boards

Code: SSB  
Size: 0.5 m  
Weight: 5.5 kg



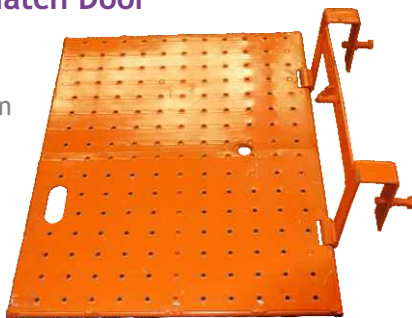
## Ginny Wheels

Code: GW  
Size: 200 mm  
Weight: 4.5 kg



## Ladder Access Hatch Door

Code: LAHD  
Size: 0.8 X 0.6 m  
Weight: 9.8 kg



## Edge Protection Standards

Code: 1.2MEPSTD  
Size: 1.2 m  
Weight: 8.9 kg



## Board Restraints

Code:	0.7MBRS	1.2MBRS	1.8MBR
Size:	0.7 m	1.2 m	1.8 m
Weight:	4.7 kg	8 kg	12 kg



## Counter Weight

Code: 20cw  
Weight: 20.0 kg



\*Pictures are for illustrative purpose only, weight of product may vary.

Visit [www.turboscaffolding.com.au](http://www.turboscaffolding.com.au)



## Adjustable Galvanised Props

Code	Size	Weight	W.L.L. Open	W.L.L. Closed
P0	1.07-1.82m	14.05 kg	19.00 kN	26.50 kN
P1	1.75-3.12m	20.22 kg	13.26 kN	20.40 kN
P2	1.98-3.35m	21.25 kg	11.72 kN	20.66 kN
P3	2.59-3.95m	23.08 kg	11.73 kN	18.36 kN
P4	3.20-4.87m	28.07 kg	6.63 kN	16.32 kN

\*Pictures are for illustrative purpose only, weight of product may vary.