



**LYTA MESH**

**— PRODUCT BROCHURE —**

[www.turboscaffolding.com.au](http://www.turboscaffolding.com.au)



## LYTA MESH

Lyta Mesh is a light weight, high tensile, flexible and fire retardant polymer product that is designed for falling objects control measures, and/or non- structural infill of temporary edge protection on building construction sites.

Lyta Mesh is to be used in conjunction with a scaffolding system; it is formed of homogenous polymer materials, including a grid of polymer straps. A knitted woven polymer mesh is attached to one side of the grid. The edges of Lyta Mesh have a strip of polymer sheeting attached to the grid with eyelets for ease of attaching.

The material used in the construction of Lyta Mesh has UV protection additive to assist the product to have a longer service lifespan.

The product is compliant with performance requirements of AS/NZS 4576: 1995, AS 2001.2.3.1:2002, AS/NZS 4994.1:2009, AS/NZ 1891.1:2007, and Division 3, Chapter 6, WH&SR 2011, Queensland Government. The product has been tested under AS 1530.2-1993 and its Flammability Index is 3.

### FEATURES :

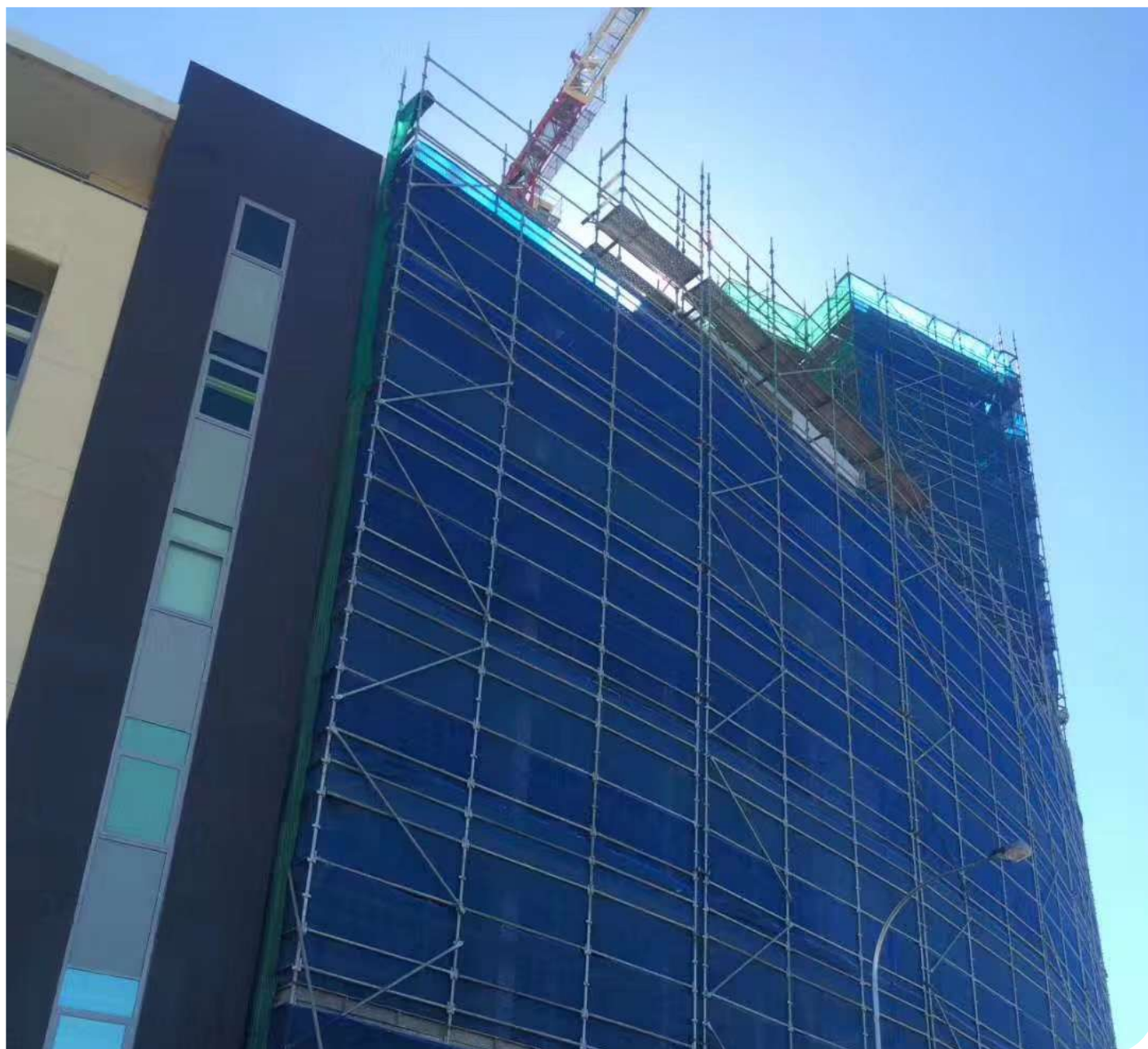
1. Fire Retardant with flammability Index of 3
2. Wind drag Co-efficient
3. Reusable for multiple times
4. Recyclable (limitations apply)
5. Easy to use and install
6. Free Grid Strength Testing after two years of use (conditions apply)
7. Easy to be rolled back to original size after use
8. 3 years manufacturer's warranty (conditions apply)
9. Stitched border line with eyelets for easy Installation





CODE NUMBER	SIZE	COLORS AVAILABLE
LMESH - 15M x 1.8M	1.8M x 15M Long	BLUE (stock item), BEIGE, RED and BLACK
LMESH - 15M x 1.0M	1.0M x 15M Long	BLUE (stock item), BEIGE, RED and BLACK

\* Minimum quantity applies for some color orders.





# AWTA PRODUCT TESTING

Australian Wool Testing Authority Ltd - trading as AWTA Product Testing  
A.B.N 43 006 014 106  
1st Floor, 191 Racecourse Road, Flemington, Victoria 3031  
P.O Box 240, North Melbourne, Victoria 3051  
Phone (03) 9371 2400 Fax (03) 9371 2499

## TEST REPORT

Test Number : 19-000192  
Issue Date : 24/01/2019  
Print Date : 24/01/2019

**Sample Description** Clients Ref : 'Lytamesh (with edging)'  
Reinforced shade cloth  
Colour : Blue  
Nominal Composition : Polymer shadecloth attached to polymer grid with polymer edge material  
Nominal Mass per Unit Area/Density : 650 g/m<sup>2</sup>

AS 1530.2-1993

**Methods for Fire Tests on Building Materials, Components and Structures.  
Part 2: Test for Flammability of Materials**

Date Tested	24/01/2019
Flammability Index	3
	Length
Spread Factor	2
Heat Factor	1
Maximum height (d)	
Mean	3.9
Coefficient of Variation	53.7 %
Heat (a)	
Mean	1.6 °C.min
Coefficient of Variation	15.0 %
Number of Specimens Tested	9
Observation	Visible smoke, melting.

These test results relate only to the behaviour of the test specimens of the material under the particular conditions of the test, and they are not intended to be the sole criterion for assessing the potential fire hazard of the material in use.

9 Specimens tested only.

154409

33446

Page 1 of 1

© Australian Wool testing Authority Ltd  
Copyright - All Rights Reserved



Accredited for compliance with ISO/IEC 17025 - Testing

- Chemical Testing  
- Mechanical Testing  
- Performance & Approvals Testing

: Accreditation No. 983  
: Accreditation No. 985  
: Accreditation No. 1356

Samples and their identifying descriptions have been provided by the client unless otherwise stated. AWTA Ltd makes no warranty, implied or otherwise, as to the source of the tested samples. The above test results relate only to the sample or samples tested. This document shall not be reproduced except in full and shall be rendered void if amended or altered. This document, the names AWTA Product Testing and AWTA Ltd may be used in advertising providing the content and format of the advertisement have been approved by the Managing Director of AWTA Ltd.



APPROVED SIGNATORY

MICHAEL A. JACKSON B.Sc.(Hons)  
MANAGING DIRECTOR



## STANDARD FEATURES

- Fire retardant
- Reusable many times
- Wind Drag Co-efficient



**PHONE :**

Sydney: 02 9725 5233 | Melbourne: 03 9357 6388

Brisbane: 07 3034 1535 | Perth: 08 9410 0213

**VISIT :**

[www.turboscaffolding.com.au](http://www.turboscaffolding.com.au)